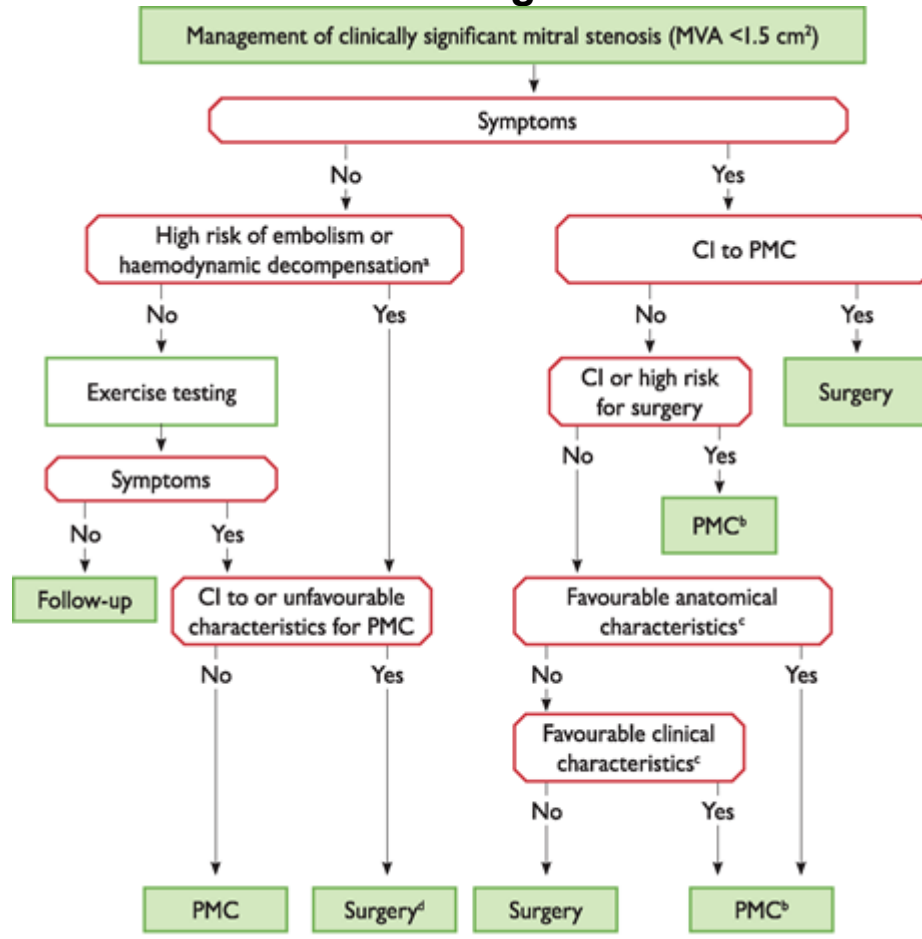


## Mitralisstenos - Kardiolog



### Management of clinically significant mitral stenosis

Management of clinically significant mitral stenosis. CI = contra-indication; MS = mitral stenosis; PMC = percutaneous mitral commissurotomy.

Referens: 2017 ESC/EACTS Guidelines for the management of valvular heart disease, s 2763, figure 5

### Mer information

Se 2017 ESC/EACTS Guidelines for the management of valvular heart disease under relaterad information.